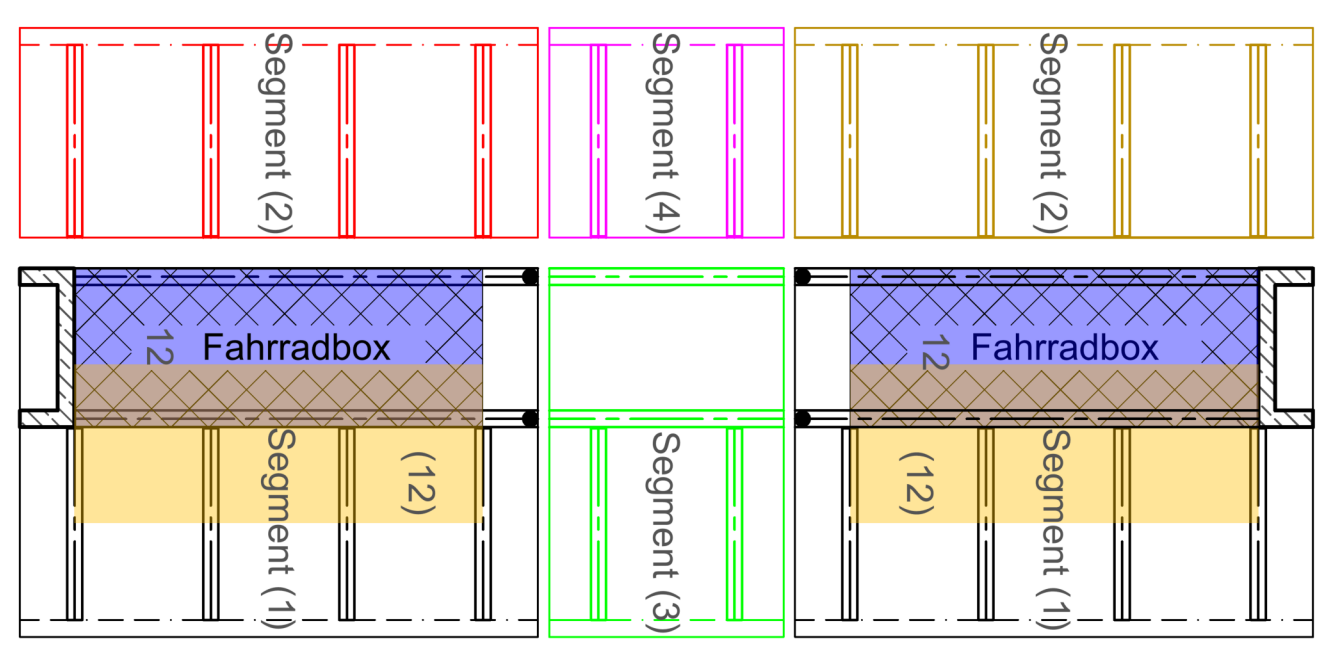
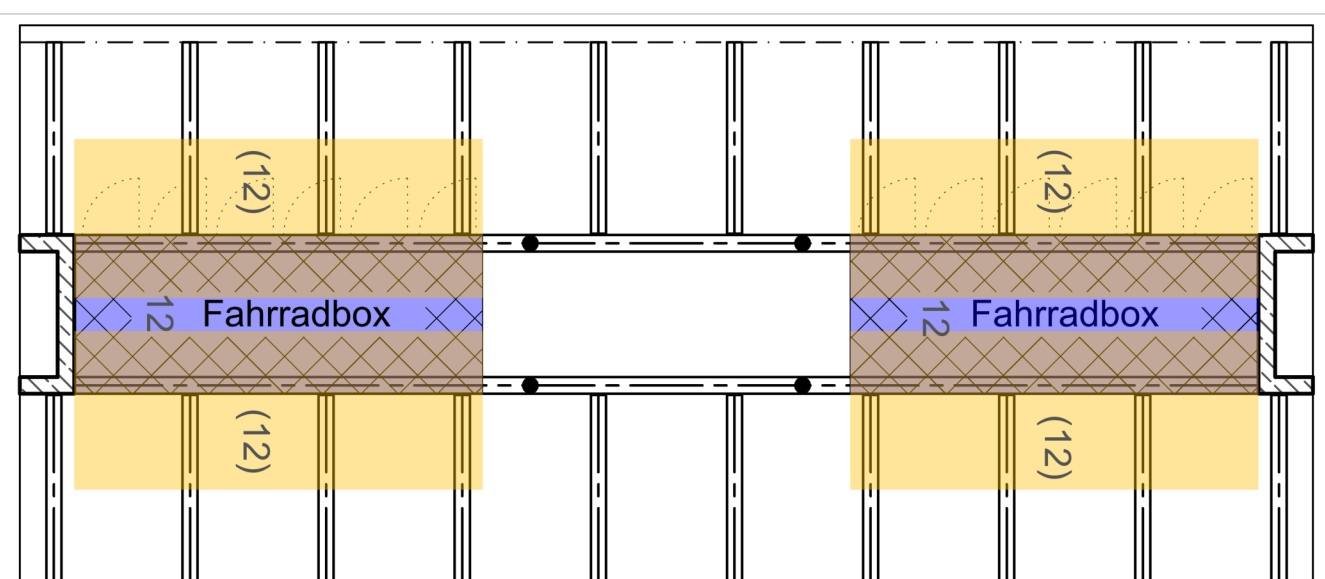
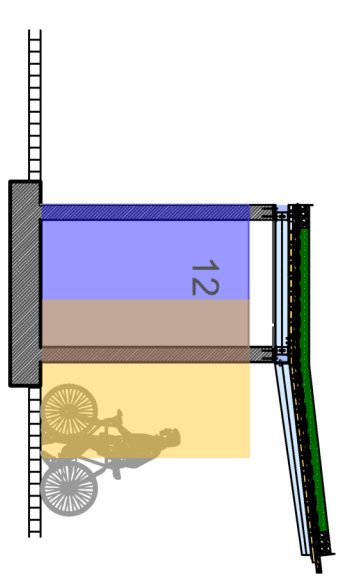
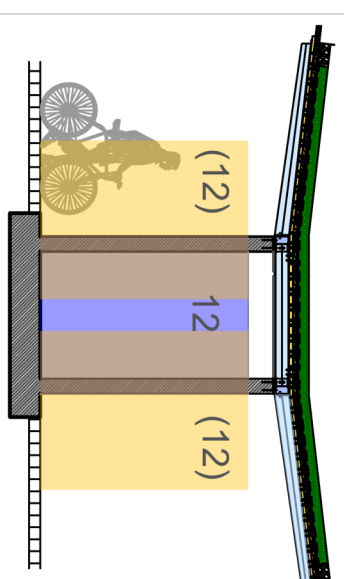
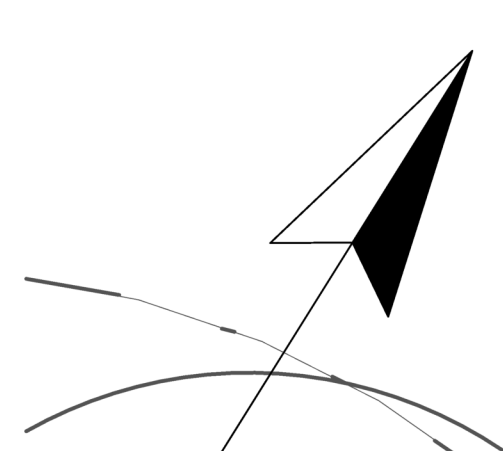
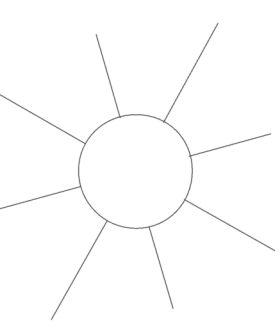
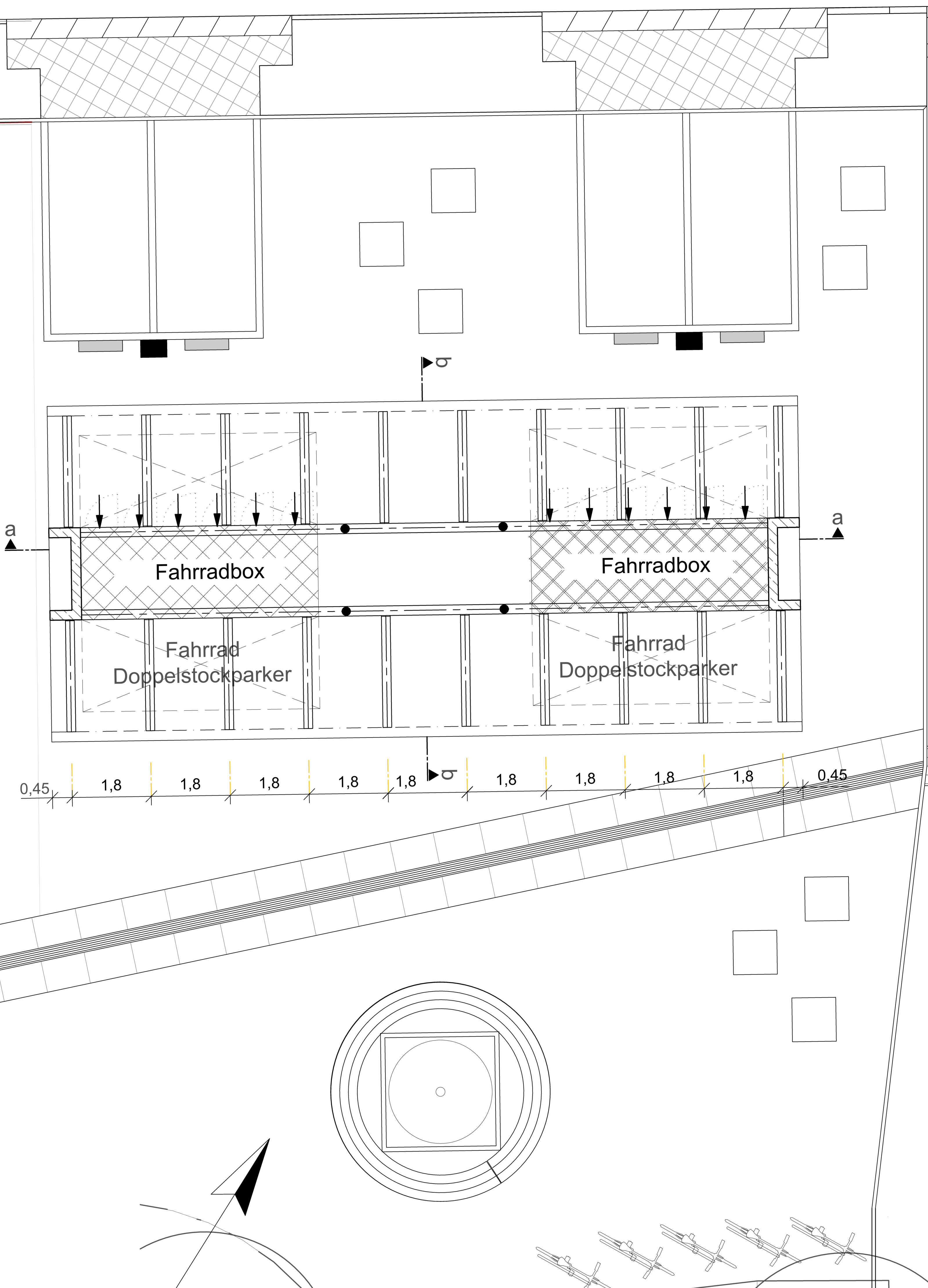


Mühlenstraße

Prager Straße

Planungsbereich Gartenbauamt



VORABZUG!

SEESTADT BREMERHAVEN

Mobilisastation Prager Straße, Variante 3 Übersicht

STADTPLANUNGSAMT BREMERHAVEN

Maßstab: 1:50  
Amt 63 Gevißz, Amt 61/3 Alexander Blauerte  
Datum: 21.11.2024  
AZ:

DN A1